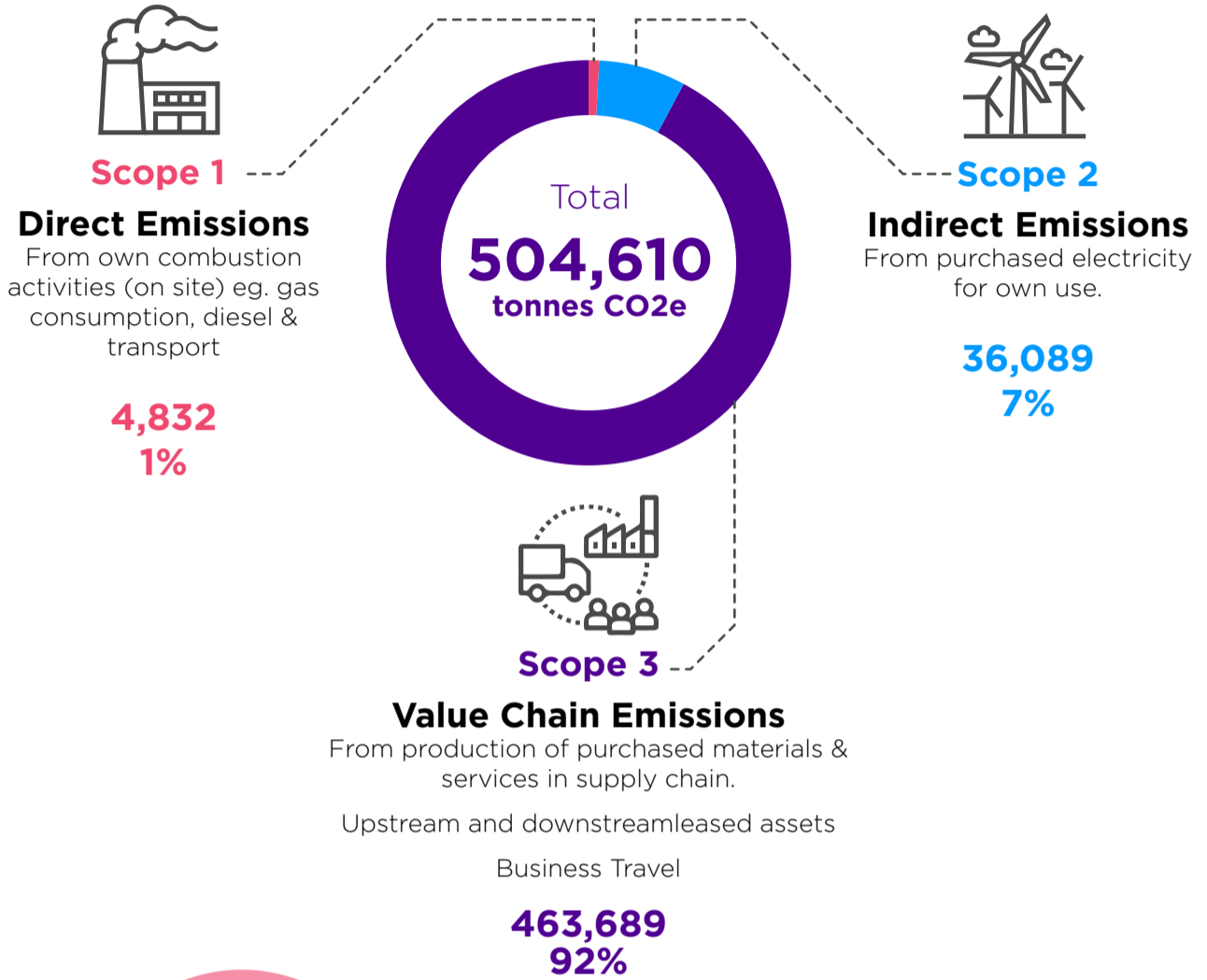


# colt

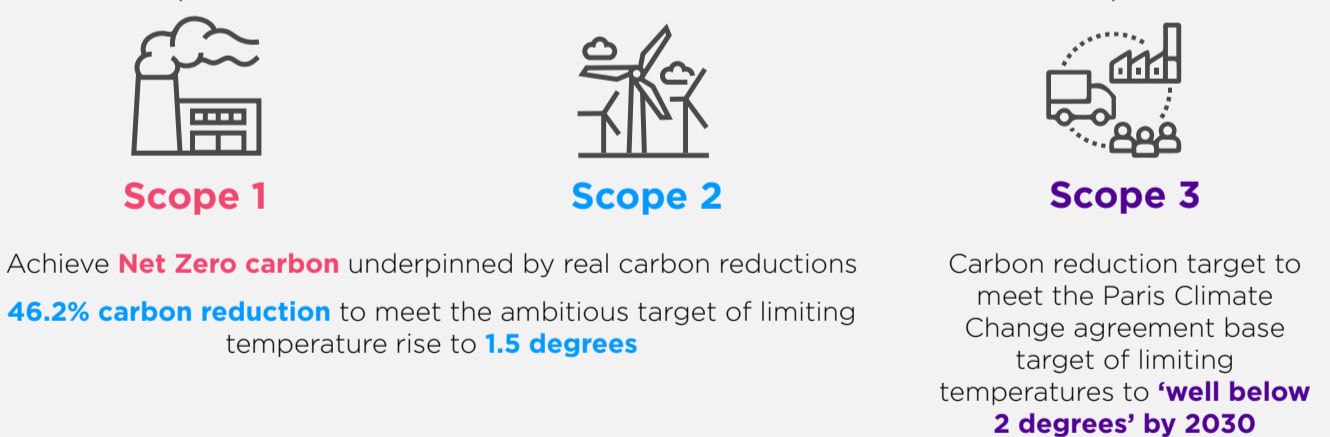
## Carbon Reduction Journey



### Colt's 2019 baseline emissions



### Our 2030 aims



### Our targets are backed by the SBTi

Our targets have been **independently verified**

The Science Based Targets initiative (SBTi) drives ambitious climate action in the private sector by enabling companies to set **science-based emissions reduction targets**

We're holding ourselves accountable to the **highest standards**